

Aatmanirbhar Bharat

Ka Ri India ba dap ba biang da lade

Ka Jingplie lad ban kyntiew ia ki karkhana
rit kiba la dei bad ki karkhana marbam



VOCAL FOR LOCAL

KA SUR NA KA BYNTA KI PAID LAJONG

Ka Skim U Myntri Rangbah Duh ka
Ri na ka bynta ki karkhana rit ba
pynkylla dur ia ki marbam



Ka Tnat treikam jong
Ka Ministry of Food Processing Industries
ka Sorkar Kmie ka Ri India

Aatmanirbhar Bharat

Ka Ri India ba dap ba biang da lade

Ka Jingplie lad ban kyntiew ia ki karkhana rit kiba
la dei bad ki karkhana marbam

VOCAL FOR LOCAL

KA SUR NA KA BYNTA KI PAID LAJONG

Ka Skim U Myntri Rangbah Duh ka Ri na ka bynta ki
karkhana rit ba pynkylla dur ia ki marbam



Ka Tnat treikam jong
Ka Ministry of Food Processing Industries
ka Sorkar Kmie ka Ri India



Ka Tnat treikam jong
Ka Ministry of Food Processing Industries
ka Sorkar Kmie ka Ri India

Ka jingpyrshang ba kongsan hapoh ka Aatmanirbhar Bharat Abhiyan lane ka thong ban pynlong ia ka Ri India ba dap ba biang da lade, ka ba ai ia ka lad ba kordor ia ki nongseng kam karkhana marbam ba rit, ki FPO/ ki SHG/ ki Cooperatives ban ioh jingmyntoi na ka skim kaba ₹10000 klur tyngka ba lah mang ban pyntreikam ia ki 2 lak tylli ki karkhana rit ba pynkylla dur ia ki marbam.



“

Ka jingkyntup lang ia kino kino ki lad ban pynkut noh ia ki jingeh jong kumba 130 klur ki nongshong shnong ka long ban pynlong ia ka Ri India ban ieng ha la ki kjat ne ban pynbiang hi da lade. Ka lynti kaba ha khmat eh ka shong pat na la ki shnong ki shnong ban pynmih ia ki mar ba la shna hi, ki iew shnong bad ia u kynjri jong ka khaii ka pateng. Ki trai shnong kim dei eh ba ki donkam ia kine hynrei ka jingkitkhlieh da lade hi”

NARENDRA MODI,

Myntri Rangbah duh Ka Ri India



HARSIMRAT KAUR BADAL

Myntri ka Sorkar Kmie
Minister of Food
Processing Industries



RAMESWAR TELI

Myntri ka Sorkar Kmie
Minister of State,
Food Processing Industries

Ka Jinglamphrang

1.1 Ka bynta ki karkhana marbam (pynkylla dur) kyllum baroh ha ka ri ki kynthup ia 25 lak tylli kiba ai kam kumba 74 na ka 100 ha ka liang ki karkhana marbam. Kumba 66 na ka 100 kine ki karkhana ki don ha ki shnong kyndong bad na kine kumba 80 na ka 100 ki dei ki karkhana rit kiba lah seng ha ki iing ki sem kiba kyrshan ia ka ioh ka kot ha ki shnong kyndong bad kiba teh lakam ia ka jing buhai sha ki jaka sor. Bad khambun na kine ki dei ki ba hap hapoh ka kynhun karkhana rit (micro enterprises).

1.2 Kine ki karkhana ki iashem ia shibun ki jingtynjuh kiba khanglad ia ka jingtreikam bad ka jingkiev jongki. Kine ki jingeh ki lah ban long ka jingduna ha ki buit bad ki kor thymmai ka juk ba mynta, ki jingioh jinghikai, ki lad ban ioh jingkyrshan na ki jaka ai ram/loan, ka jingbymtip ia ki kyndon ba donkam ha ka jing pynbiang ia ka jinglong ki mar bad ka jingbymdon ka jing pynithuh ne ka shap bad ruh ki buit khaii pateng. Na kine ki daw, kine ki karkhana rit kim lah ban nohsynfiang ha ka liang ka jingpynwan dur ia u mar ban kham ioh dor bad ruh ha ka liang ka jingmih watla ki don ia ka bor ba lah ban kyntiew ha shibun ki liang.

2. Ki Jingthmu

2.1 Da kaba shim khia kyrpang ia kane ka jing noh synfiang kine ki karkhana rit bym pat ryntih bad ia ki jingeh ba ki ia kynduh kiba khanglad ia ka jingkiev jong ki, ka tnat sorkar Kmie ka Ri, ka Ministry of Food Processing Industries (MoFPI), ka lah plie bad pyntreikam ia ka skim PM Formalisation of Micro Food Processing Enterprises Scheme (PM FME) lane ka Skim na ka bynta ki karkhana rit ba pynkylla dur ia ki marbam lyngba ki jingiarap bad jingshakri kyrpang. Ki Jingthmu ha kane ka skim ki kynthup ia:-

(i) Ka jing pynskhem ia ki jingnang jingtip ki nongsengkam lade lyngba ki training ban kyntiew ia ka buit bad ka sap bad ruh ban ai ka kti ka jingkyrshan ban sdang ia ki kam;



- (ii) Ka jingpynsnoh ia ki sha ki jaka ne tnat ai jingiarap pisa lyngba ki ram ne loan ban pynbha shuh shuh ia ki kam kiba ki dang ialeh ryngkat ki buit thymmai
- (iii) Ka jingkyrshan ia ki kynhun nongrep ba pynmih mar- Farmer Producer Organizations (FPO), ki Self Help Group (SHG), Ki Cooperative ki nongpynmih mar bad ki Cooperative Society ha ki kam ba tyllun ki jongki ban pynkylla dur ia u mar ban kham iohng khnang ba kin ioh ia ki jingshakri ba donkam

25 lak
ki karkhana marbam
ki bym pat ryntih ki
nohsynfiang

74%
ka jingai kam ha ka
liang ka kam pynkylla
dur ia ki marbam

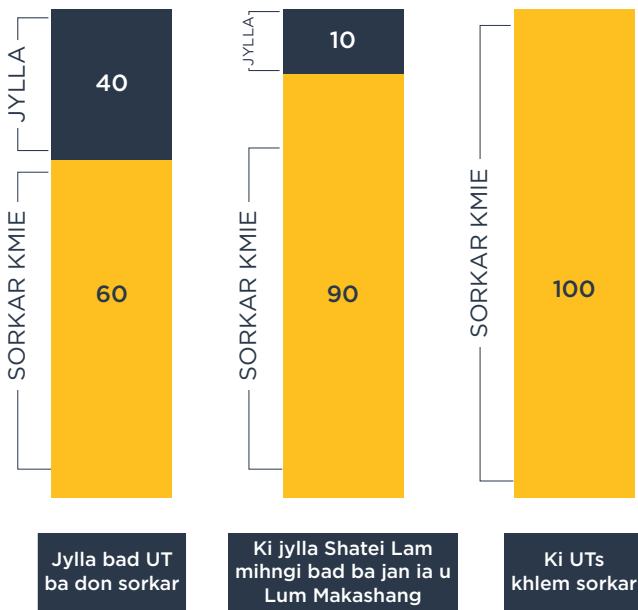
- iv) Ka jingkyrshan ban pynkylla ia ki kam ba lah seng da lade sha ki kam kiba wan dur kiba lah ban rejistar hapoh ki kyndon ba ryntih bad ba la ithuh;
- (v) Ka jing pyniasnoh bad ki rukom pyntyllun ba ryntih ia ki kam ban pynpoi sha u nongthied da kaba pynkupbor ia ka jingithuh ne ka shap ka kam jongki bad ka iew kaba biang;

3. Ki jylla bad ki dewlynnong rit ka ri (UTs) kiba ioh ia ka jingiarap bad ka rukom mang pisa

3.1 Ka dei ka skim kaba jngoh ia baroh ki jylla bad UT ka Ri kaba lah mang T. 10,000 klur ban iarap ia ki 2,00,000 tylli ki karkhana ne kam seng lade ia ka

ban pyndep ha ki 5 snem naduh ka 2020-21 haduh 2024-25. Ka jingpynlut hapoh kane ka skim kan long da ka jing ia noh synniang na ka Sorkar Kmie bad Sorkar Jylla ha ka bhah ba 60 la 40 bynta, 90 la

RUKOM BHAAH IA KA JINGLUT HA KANE KA SKIM



10 bynta ha ki jylla ka thain Shatei Lam mihngi bad ki jylla ba jan ia u Lum Makashang, 60 la 40 bynta ki dewlynnong UT kiba don ka sorkar bad baroh 100 na ka sorkar kmie ha ki wei pat ki dew lynnung UT

3.2 Ka jingdonkam pisa ha ka snem kaba nyngkong kata 2020-21, ia ka jingpynlut ka dei na ka Sorkar kmie ne Jylla, yn bei 100 na ka 100 da ka Sorkar kmie. Ki jingpynlut ha ka snem kaba nyngkong yn sam katkum kitei ki jingmang ne bhah ba lah kded haneng bad yn sa pynpoi biang kumjuh man u snem na ka bynta ki saw snem ba bud.

3.3 Ia ka jingiarap ai pisa ha kane ka skim yn sam sha ki Jylla hadien ba lah biang bad mynjur ia ka plan- Project Implementation Plan (PIP).

4. Ka thong Kawei ka distrik- Uwei u jait mar

4.1 Kane ka skim kan sa pyntreikam da ka jingthmu ban leh ia ka thong Kawei ka distrik- Uwei u jait



mar lane One District One Product (ODOP) khnang ban ioh lum ia ki jingmyntoi kham bun ha ka liang ka jingthied ia ki mar donkam, ban ioh ka juh ka jingiarap ha ka liang ka iew bad kiwei de ki kam. Ka buit Kawei ka distrik- Uwei u jait mar kan sa ailad ia ka jingpynkhreh ia ka plan ba biang khamtam ha ki kam ba iadei bad ka jingpynkylla dur ia u mar ban kham shong dor bad ruh ia ki jingtei ne tiar kiba donkam ban leh iaka. Ka lah ban long ba don kham bun ki kynhun shnong ha kawei ka distrik ia u juh u jait mar. Te kane ka kynhun ka lah ruh ban kynthup ia ki shnong kiba markhap bad kawei pat ka distrik. Ka jylla ka dei ban ithuh ia ki jait mar na ka bynta kine ki distrik da kaba khmih sani halor ki jait mar ba kham duh kloii ha kane ka skim. Ka ODOP ka lah ban



ONE DISTRICT ONE PRODUCT

long halor u mar rep ba kham duh kloii, ki mar rep ba kynja symbai kum u kba/kew/riewhadem lane u jait mar rep ba bam ba kham kynrei ha ka distrik lane kino kino kiba iahap ha kane ka kam rep kam riang. Kum ka nuksa, ki lah ban long ki mar kum u sohpieng, u phan, u sohmanir, sohsaw, phandieng, u kinnu, u bhujia, u pitha, u papor, ashar, ki mar na u krai, na ka ri dohkha, ri syiar, ka doh, ki mar bam jingri bad kiwei kiwei de. Ha kaba ia dei bad kane ka skim



yn ai jingiarap shwa nyngkong ia kito ki karkhana rit kiba pynmih mar katkum ka ODOP. Na ka bynta kito ki kynhun kiba trei ia ka kam bad kiwei pat ki jait mar ha kata ka distrik, ka jingiarap kan long tang na ka bynta kito kiba lah dep sdang lypa ia ka kam ba kine ki jingiarap kin long ka jingiarap pisa tang



kat ba donkam, ka jingai jinghikai ba donkam bad ka jingpynskhem shuh shuh ia ka kam jong ki. Ka jingiarap halor ki jingtei ba donkam bad jingithuh ne ai shap ia ka kam jong ki yn leh tang ia kito kiba bud ia ka ODOP. Ha kaba ia dei bad ka jingiarap ha ka liang ka iew bad ithuh shap na ka bynta ka jylla ne ka thain, ki juh ki mar na ki distrik kiba lah ban nym hap ha ka ODOP yn lah ban pynrung.

4.2 Kane ka skim kan ai jingkyrshan ruh ban pynskhem ia ka jingiadei bad ki nongshim bynta baroh ha ka kam ba ki leh, kan ai ruh ia ka jingshakri ba ia donkam baroh, ki jaka pdem ne buh, ki jinghikai, ka R&D, ka iew ka hat bad ka jing ai shap ne jingithuh, ia kaba yn khmih shwa ia kito ki ba

leh ia u mar ba iahap ha ka ODOP. Ha ka juh ka por, kane ka skim kan sa shim kabu bad ruh ai ia ka jing pynskhem ia ki skim ka sorkar ba lah don lypa kum ka Development of Agriculture Crop Clusters under the Agriculture Export Policy lane ka jing pyniar ia ka kam pynmih u juh u mar rep jong ki kynhun ki shnong ne thain kiba wan na ka Tnat sorkar kmie ka Ministry of Agriculture and the Ministry of Rural Development through the National Urban Mission.



5. Ka Jingiarap sha ki karkhana pynkylla dur ia u marbam

Ki jingiarap yn ai na ka bynta kine ki mat harum

- (i) Ka grant ba iasoh bad ki loan yn sam haduh 35 na ka 100 ka jinglut ha kaba ka jingioh ka kot haduh T. 10 lak na ka bynta ki karkhana ba lah don lypa ban kham pynbha shuh shuh;
- (ii) Ka grant ba iasoh bad ki ram yn sam haduh 35 na



ka 100 ka jinglut sha ki SHG/FPO/Cooperative katkum ka jingpynbeit ba lah ban ioh;

- (iii) Ka jingiarap ban sdang na ka bynta shimet ia kito kiba lah don bynta lypa ha ki kam kaba long T. 40,000/- kum ka bai seng kam;
- (iv) Ka grant ba iasoh bad ki ram yn sam haduh 35 na ka 100 ka jinglut na ka bynta ki jingtei ba ia donkam lut baroh katkum ka jingpynbeit ba lah ban ioh;
- (v) Ka jingkyrshan ban iarap ha ka liang ka iew ka hat bad ban ioh ka jingithuh ne ban ai shap ia ka kam haduh 50 na ka 100 ka jingdonkam pisa bad katkum ka jingpynbeit ba lah ban ioh ym palat ia kaba lah buh.

6. Jingpynbha ne pynkiew ia ki karkhana ba lah don lypa

6.1 Na ka bynta Shimet: Ia ki karkhana rit shimet kiba leh ia kam pynwandur ia ki marbam, yn sam ia ka jingiarap ba iasoh bad ki loan kaba long 35 na 100 ka subsidy, ia kito kiba lah ban ioh, na ka jinglut ba ki lah khein ban pyniar ia ka kam ne ban sdang pat da ki buit ba kham bha ia kaba yn ym palat T. 10 lak kawei ka kam. Ka jingnoh synñiang na shimet ka dei ban long la kumno kumno 10 na ka 100 na lade

bad kaba sah na ka bank lum ka ram

6.1.1 Ki mat ia kito kiba bit ban ioh:

- (i) Kiba shimet ne kynhun kiba don ia ka jinglong trai ia ka kam ba ki leh;
- (ii) Ki karkhana rit ba iadei bad ka jingpynkylla dur ia ki marbam kiba lahdep wad bniah da ki riew khmih (Resource person)
- (iii) Ki ba kwah ban pyrshang ioh jingiarap, ki dei ban long kiba la 18 snem ka rta bad ki dei ban long kiba la pass ia ka klas VIII la kumno kumno;
- (iv) Tang u/ka wei na kawei ka longing ki lah ban ioh jingiarap. Hangne, haba ka longing, ka thew ialade, ia u/ka tnga bad ki khun.

6.1.2 Kumno ban aplai na ka bynta ban pynthymmai/ pynbha shuh shuh ia ka kam :

6.1.2.1 Ia ki aplikeshon yn pyllait ha ki distrik bad ban iai bteng na ka bynta ki ba kwah ban ioh jingiarap na kane ka skim. Kito ki karkhana ba lah don lypa kiba kwah ban kham pynbha ia ka kam ki lah ban aplai ia kane ka skim ha ka rynsan FME portal ha ka internet. Ia ki ram na bank yn sa pynshlur hadien ba lah dep iit bniah. Ki jylla kin peit thuh hi ia ka rukom jied ia kiba dei ban ioh jingiarap bad ba kin ai ktien sha ki bank ban pyniaid ia ka kam.

6.1.3 Ki kam ba iadei bad ka bank na ka bynta ka grant:

6.1.3.1 Na ka Sorkar Kmie, yn jied ia ka bank ka ban sam ia ka subsidy sha ki bank ban pyntreikam ia kane ka skim sha kiba bit ban ioh jingiarap. Ka bank ka ban ai ia ka loan kan sa shna ia kawei ka account kito ki nongshim jingiarap. Ka grant na ka sorkar kmie bad ka sorkar jylla ha ka bhah 60:40 yn pyllait sha ka account jong u/ka ba ioh jingiarap

Kiba kwah ban ioh jingiarap

Jingiarap na ki ba tei kum ki Resource person ka distrik

Kaba pah ia ki aplikeshon

Ka jing mynjour bad shah na ka Committee ka distrik lane na ka Tnat ka Sorkar jylla ba khmih

Ka jing ai ktien sha ki bank ban sdang ia ki kam ba donkam



da ka bank ba shna ia ka account jong ki. Lada 3 snem hadien na ka sngi ba lah pyllait ia ka pisa/loan ba khatduh sha ka account jong ki ba ioh jingiarap, lada ka account jong ki ka biang bad ka kam jong ki ka dang ia id bha, yn sa pynbeit ban pynbiang ia ka pisa ha ka account jong ki ha ka bank ba ki don. Ka jingpyllait pisa sha ki kynhun bad ki jaka ba ia pyndonkam baroh kan long ha ki bank ba ki don account da kaba bud ia ki juh ki kyndon.

6.2 Na ka bynta ki kynhun: Kane ka skim kan ai jingiarap ha ki kynhun ki shnong na ka bynta ki FPO/SHG/ Ki Cooperative ki nongpynmih mar ha baroh shi lynter ki kam ba ki pyntyllun. Kine kin ioh ia ki jingkyrshan harum:

- (i) Ka grant kaba 35 na ka 100 ba la pyniasoh bad ki loan na bank na ka jingdonkam ba pura ryngkat ka jingpynbeit ia ka jing ioh bym lah ban palat;
- (ii) Ki jingiarap halor ki training ne jingai jinghikai;

- (iii) Ka jingiarap ban pyniaid iew bad ban ai shap ne jingithuh ia ki mar kiba hap hapoh ka ODOP ban ioh ban pynpaw pyrthei ia u wei u jait mar.

6.2.1 Kiba lah ban ioh ia ka jingiarap:

- (i) Kadei ban long ka kynhun ba lah pyntrei lah 3 snem ym duna ia ki mar ba iahap ha ka ODOP;
- (ii) Ha kaba ia dei bad ki FPO/ Cooperative, ki dei ban long kiba la ioh ia ka jingtyllun ka pisa kaba T. 1 klur bad ka plan ne jingpan jingiarap ba thymmai jong ki kan ym dei ban palat ia ka jing ioh pisa kaba ki dang ioh na ka kam;
- (iii) Ki SHG / Cooperative / FPO ki dei ban don la ka jong ka bhah ban noh synniang la kumno kumno 10 na ka 100 ka jingdonkam ba ki pan ban pyntreikam.

6.3. Ka bai seng na ka bynta ki SHG:

Kane ka skim ka kitkhlieh ban sam ia ka bai seng kaba T. 40,000/- u/ka wei u/ka dkhot jong ka SHG kiba don bynta ha ki kam ba iadei bad ka jingpynkylla dur ia ki marbam khnang ba ki lah sdang ka kam ne ban ioh thied tiar. Ia ka bai seng yn sam sha ki federation jong ki SHG kum ka grant ia kaba hadien pat yn sa sam sha ki SHG bad sha ki dkhot kum ka ram kaba ki lah ban shim na ka group ban pyntreikam.

6.3.2 Kiba lah ban ioh ia ka jingiarap:

6.3.2.1 Na ka bynta ka bai seng kam, tang ki dkhot ka SHG kiba dang iai leh ia ka kam pynkylla dur ia ki marbam(Food Processing) ki lah ban ioh ia kane ka jingiarap. Ki dkhot kiba ioh ia ka ne ka jingiarap ki dei ban kut jingmut ban pyndonkam hok ia kane ka bai seng ha ka ban sdang kham bha ia ka kam lane ban thied tiar donkam bad ba ki dei ban ai ka jing shaniah ia ki group ba ki don ne sha ka Federation ba ka group jong ki ka don.

7. Ka jingthaw ia ki jaka/jingtei ba ia donkam lut baroh

7.1 Ki FPO/ SHG/ Cooperative/ tnat ka Sorkar ne ki riew shimet kin ioh ia ka jingiarap ban shna ia



ki jingtei ne jaka ba ia donkam lang baroh kiba lah ban long kum ka jaka ba pynkylla dur ia u mar, jaka pdem/pyllang/lum, ki kamra kyrpang laboratory, ki kudam, ki kudam pjah ba kyrpang bad kiwei de. la ka jingjied ia kum kine ki kam, yn shong eh ha ka jing peit bniah ia ka jingioh nong ki nongrep bad ki karkhana, ka jingiahap ka kam, ba lait na ka jing treikam shimet, kaba long kordor na ka bynta ban pynneh bad pynkylla dur ia u mar rep khlem duhnong. Ka grant kaba 35 na ka 100 ba la pyniasoh bad ki loan na bank ryngkat ka jingpynbeit ia ka jing ioh bym lah ban palat.

8. Jingiarap ban pynioh jingithuh ne ka shap bad ka jing pyniaid iew

8.1 Ka jingiarap halor ka jingpyniaid iew bad ka jing ithuh ne ai shap ia ka kam yn ai sha ki FPO/SHG/ Cooperative lane ki Special Purpose Vehicle kiba don ki karkhana rit ba pynkylla dur ia ki marbam hapoh kane ka skim da kaba bud ia ka rukom pyntreikam ia ia ki kynshun ki shnong lane cluster khnang ban ioh lad ban iarap ha ki kam song ia ki mar bad jingshon shap ia ki ryngkat ka jingphikir ha ka khuid ka suba, ka jingryntih ki mar ba lah song bad da kaba bud ia ki kyndon ka ain ba ia dei halor ki marbam ba khuid bad bha na ka bynta ki nongthied.

8.2 Ka jingiarap na ka bynta ka iew ka hat bad jing shon shap ia ki mar ka shong ha ka jingbun jong ki da ka jingshimbynta jong ki FPO/SHG/ Cooperative ban wallam ia shibun ki nongpynmih. la kine ki seng ne kynhun yn iarap hadien ka jingbishar ba biang



ia ki plan jong ki lane ka Detailed Project Report (DPR) ia ka kam ba ki thmu. Ka jingiarap ba haduh T. 5 lak kan don ha ka State Nodal Agency ban sam katkum ki plan bad DPR na ka bynta ka jing ithuh bad ka jingpyniaid iew.

8.3 Ka jingiarap na ka bynta ka iew ka hat bad jing ithuh ia ki kam kan long 50 na ka 100 ka jinglut ba pura ia kaba yn sam katkum ka jingpynbeit ba lah ban ioh ym palat ia kaba la pynbeit. la ki aplikeshon na ki jylla lane ki kynhun ba ia trei kiba kwah jing

ithuh ne ka jingiarap ka iew ka hat yn khmih shwa na ka bynta ki mar kiba kham iaid bad kiew arted ha ka Ri. Yn ym don jingiarap ban shna ne tei dukan die ha kane ka skim.

8.4 Kumno ban ioh ia ka jing iarap:

8.4.1 Ha kaba ia dei bad ki SHG/FPO/Cooperative lane ki SPV kiba kwah ia ka jingiarap ban ioh jingithuh bad ruh ha ka liang ka iew hapoh ka skim, ki hap ban pynbiang ia ka plan ba pura ne ka DPR bad thep sha ka State Nodal Agency (SNA). Ka SNA kan sa peit khmih bha ia kane ka aplikeshon bad hadien ka jingbishar ka State Level Approval Committee (SLAC) yn sa shim jingbit na ka MOFPI. Hadien kata yn sa pynpoi ia ka jingpan sha ki Bank ban sam ia ka ram. Ki juh ki mat dei ban pyndep na ka bynta ban ioh jingiarap ban tei ia ki jaka ba donkam baroh.

9. Ka jingpynskhem ia ki jingtip bad ki jingwad bniah

9.1 Ki training ki long kiba kongsan ha ka jing kyntiew ne pynbha bad jing pynryntih ia ki karkhana rit kiba trei iaka kam pynkylla dur ia ki marbam. Baroh kiba ioh jingiarap, ia ki long ki kynhun ne ki riew shimet, kin hap ban ioh ia ka bai rneng ban kham pynjanai ia ki sap treikam. Nalor nangta, ia ki jingiarap ha ki training yn sa ai ruh sha ki riew shimet ba seng kam lade bad ki kynhun kiba lah don lypa ia ka kam bad kiba bud ia ka kyndon ka ODOP ha ka distrik, wat la kim don ia ka loan ha ki bank.

NIFTEM bad IIFPT ha ka National Level Training ia ki ban ai jinghikai

State Level Technological institutions Training ia ki Resource person

Cluster Level Training ia ki ba seng kam lade/ Training ia ki group

la ki training yn ai ruh sha ki to kiba don jing iadei bad ka jing pynskhem ia ka jing pyniaid iew bad ka jing pyn ithuh ne ai shap(Branding) lane ia kito kiba don ka jingthmu ban ia snoh ia kane ka kam.



9.2 Ka National Institute for Food Technology Entrepreneurship and Management (NIFTEM) ka skul bah ba iadei bad ki kam seng kam lade bad ki marbam,lem bad ka Indian Institute of Food Processing Technology (IIFPT), kine ki ar hapoh ka MOFPI lah ai ia ka jingkitkhlieh ban sdang bad pyniaid ia ka jing pynkupbor ia ki jingtip bad ki jing wad bniah. Ha ka jylla, ki dei ban iasnoh bad kawei na ki skulbah ba ia dei bad ki buit thymmai bad ki marbam ia kiba lah jied da ka sorkar jylla ban iarap ha ka ban pynskhem ia ki jingtip ba donkam lem ki training.

9.3 Ia ki training ban ai sha ki riew shimet lane ki kynhun, yn khmih sani bha halor ka phang ban pynskhem ia ka jingseng kam, ki jingtip ba ki kynhun seng kam ki dei ban tip bad leh, shaphang ka jingbuh jingthoh, ka jingrejistar, shaphang ki kyndon ka FSSAI, ka Udyog Aadhar, ka GST, ka jingleh khuid, ka jing song ia ki mar, ka iew ka hat. Ki training kyrpang halor ka ODOP bad ki mar ba kham iaid bha yn ai ha ki jaka ba kham jan bad kito kiba don ki kam seng hi da lade. Ki seng kum ka RSETI kiba lah don lypa kin sa long ki ksiang ba pyntreikam ia kane ka jingthmu.

10. Ki seng bad ki skul bah ba don jingjadei

10.1 Kane ka skim ka khmih kham bniah ia ki riwlum ne ki ST/SC, ki kynthei bad ki distrik ba don

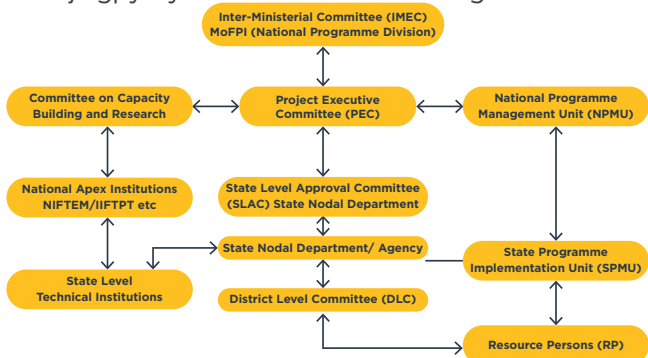
ka jingthmu bad ki FPO, SHG bad ruh ki cooperative. Ka TRIFED, ka National SC Development Finance Corporation, ka NCDC, ka Small Farmer Agri-Business Consortium (SFAC) bad ka National Rural Livelihood Mission hapoh ka tnat sorkar kmie ka Ministry of



Rural Development ki la ia trei ban pyniaid ia ka kam ha kine ki jaka. Kitei ki seng bad ki skulbah ba lah jer kyrteng ki lah ruh ban ia treilang ha ka ban ithuh ia ki kynhun/ ne kynhun ki shnong ba sah ki ST/SC, ki Cooperative, ki FPO bad ki SHG bad ban pyntip pat ia ki sha ka tnat ba dei peit ka jylla ka Project Implementation Plan (PIP).

11. Ka rukom pyntreikam bad bud dien ia ki kam:

11.1 Kane ka skim kan don ia kane ka rukom treikam ba lah pyni harum ha ka dur, ha ka kyrdan ka Sorkar Kmie, Sorkar jylla bad ha ka distrik na ka bynta ban ioh ia ka jingpyntyllun ia ka kam kaba biang kaba iadei:



11.2 Ka Inter-Ministerial Empowered Committee (IMEC): la ka IMEC ha ka kyrdan ka Sorkar kmie, la ialam da u myntri rangbah ka tnat Food Processing Industries (MoFPI) na ka bynta ka jingialam,

jingkhmih, bad ban pynbeit ia baroh ki kam kaba iaid ha kane ka skim, ka jingkhmih ia ka jingkiew kane ka skim bad ka jingiatai halor ka jinglong jingman kane ka skim. Kane ka IMEC kan ai jingbit ia ki kyndon jong ka skhim, jingpyntreikam ia ki plan



jong ki jylla lane union territories bad ki projek ban sdang ia ki jingbei tyngka ban sdang ia ki kam da ki SHGs/FPOs/ ki kynhun cooperatives, ki jingtei ban pyndonkam lang baroh ki nongshong shnong bad ki jingbuh aplikeshon na ka bynta ban pyniaid iew bad ban pynsaphriang ia ka kyrteng jong ka mar ia ki projek ba palat ia ka 10 lak tyngka. Yn shna ia kawei ka komittee ba khot ka Project Executive Committee (PEC) da ka MoFPI na ka bynta ban kitkhia ia ka jingpyntrei ha ka ophis bad kumjuh ban iai khmih ia ka jingpyntyllun ia ka skim. Yn shna ruh ia ka National Programme Management unit (NPMU) ka ban dei ka tnat ban iarap ia ka MoFPI ban iarap ha ki jingpyntreikam ha ka ophis bad ka skim.

11.3 Ha ka Jylla: Ki sorkar jylla kin thung ia ka Nodal department lane ka tnat bad ia u ophisar ban peit pyrman ia ka rukom pyntreikam ia kane ka skim. Yn pyntreikam ia kane da ka State Nodal Agency (SNA) ryngkat ka jingiarap na ka PMU ha ka jylla. U Chief Secretary jong ka sorkar jylla yn peit bniah bad pyniaid ia ka rukom trei jong kane ka skim lyngba ka State Level Approval Committee. Kane ka komittee kan ai jingbit ia ki jingpynlut ba tam ia ka 10 lak tyngka hapoh kane ka skim. Ha manla ka distrik, yn sdang ruh ia ki District Level Committee (DLC) hapoh ka jingpyniaid u District Collector/ DC.



11.4 Ka SNA kan sa thung ia ki District Resources Persons (DRPs) ki ban ai jinghikai bad lamlynti ia ki briew ban ioh jingmyntoi na kane ka skim. Ka jinglam lynti ka long halor ka jingpynkhreh ia ki kot ki sla na ka bynta ki projek, ban shim ram na bank, jingiarap ban ioh ban pyn rejistar bad ki licence kaba kynthup ia ki kyndon hapoh ka FSSAI, Udyog Aadhar, GST bad kiwei kiwei de.

12. Ki jingwad bniah bad ki kaiphod:

12.1 Ki sorkar jylla ki dei ruh ban iit bniah bad ban ai ia ki kaiphod na ka bynta kine harum:

(i) **Base-Line Assessments:** Dei ban iit bniah lyngba ka baseline survey ban ithuh ia ka ODOP (One District One Product). Ia kane ka kaiphod dei ban pyndep shwa ka 31 tarik u Naitung 2020 ha manla ki jylla. Yn ai sha ki jylla T. 2.5 lak haduh T. 10 Lak tyngka khnang ba kin lah ban pyndep ia kane.

(ii) Ka State Level Upgradation Plan (SLUP):

Hadien ba lah shim ia ka rai halor ka ODOP, ki jingwad bniah ba donkam dei ban sdang ha ki jylla da kaba pynshai ia ki jingdon ki karkhana kiba trei ia ka kam kaba ia dei bad u mar ka ODOP ha kata ka distrik, ha ki lyngkha ba trei, ka jingmih baroh bad ka dor, ka jingpynkylla dur ha jaka rep bad jaka ri jingri ki nongtrei, ka jing buh ne jing lum, ki kudam bad kiwei kiwei de. Kane ka jing wad bniah dei ban pyndep la kumno kumno ha ka 30 tarik u Nohprah 2020. Ka jinglut na ka bynta kane ka jing wad bniah kan dei T. 25 – 75 lak sha ki jylla.

13. Ki jingtip ba bniah/ Detailed Guidelines

Ia ki jingtip ba bniah shaphang kane ka skim lah ban shem ha ka rynsan internet na ka website ka tnat sorkar ka mofpi.nic.in



Lah pynkylla sha ka ktien Khasi da
Ka Directorate of Food Processing,
Government of Meghalaya, (SNA na ka bynta ka PM FME)



Ka Tnat treikam jong
Ka Ministry of Food Processing Industries
ka Sorkar Kmie ka Ri India

BUD IA NGI



MOFPIindia



MOFPI GOI